



Supplementary Information 2023-2024

Hardenhuish School

Inspired to learn...

...Supported to succeed

Contents

Our School	03
Admissions	04
Policies	04
Curriculum	05
Key Stage 3 Curriculum Model	06
Key Stage 4 Curriculum Model	08
Sixth Form	10
Examinations	11
Religious Education	12
Relationships & Sex Education	13
Special Educational Needs	14
Additional Information	15
Term Dates	15
School Day	15
School Uniform	16
PE Uniform	16
Transport Arrangements	17
Visiting the School	18
Leadership Team and Governing Body	19
Ofsted Report	19
Hardenhuish Educational Trust	20
Friends of Hardenhuish	20
Attendance	21
Destinations	21
Exam Results	22

Our School

Hardenhuish is an 11-18 co-educational comprehensive school set in the magnificent parkland of the former Hardenhuish Manor and Chippenham Grammar School. We enjoy an enviable reputation locally and nationally as a high performing academy, being the first school in Wiltshire to take advantage of more local leadership as part of the DfE's flagship academy scheme.

We have three priorities which permeate all that we do. Firstly, and perhaps most importantly our aim is for all our young people to be 'inspired to learn' – to leave us as independent learners, with the necessary skills for lifelong learning. We provide a purposeful approach to learning, ensuring that this incorporates fun and engagement. Our involvement with various IT innovations puts us at the leading edge of new technologies and we are continually exploring ways to incorporate ICT into lessons in a meaningful way and make exemplary provision for our most able learners.

Our second priority is the pastoral care of our young people. We put children at the centre of all we do and believe that a three way partnership with school, home and each child ensures that every individual is 'supported to succeed'. We look for opportunities to celebrate success through our rewards system, assemblies, weekly 'Headlines' and annual celebration events. Hardenhuish has been oversubscribed for several years and for the last four years all of the pupils joining us in Year 7 selected us as first preference – we appreciate the trust that parents have put in us.

“Students and staff feel safe, valued and cared for and proud to be part of the school community which places wellbeing at the centre of their school culture and ethos.”

Wellbeing Award for Schools

Finally, we aim to ensure that each Hardenhuish pupil not only achieves academic success and the qualifications to take them on to further or higher education and adult working life, but also takes advantage of the wide variety of social, personal and recreational enrichment opportunities that our impressive, extensive, well-resourced campus and fantastic staff enable us to offer. Our site is beautiful and boasts some of the most impressive educational facilities in the County, including a Creative Centre, Sports Hall with climbing wall, English and Performing Arts Centre, a modern Advanced Centre for the 6th Form and Resources Centre.

“An extremely successful and caring school. Hardenhuish has it all: good results, fantastic facilities on an impressive site, a huge range of extra-curricular activities, and a top reputation for pastoral care.”

The Good Schools Guide



Admissions

Hardenhuish School's published admissions number for entry into Year 7 is 243. Application forms are available from the Local Authority. They should be returned by midnight on **31 October 2023**.

Applications may also be made on line at www.wiltshire.gov.uk. Parents will be notified of decisions by the Local Authority on **1 March 2024**.

Our full Admissions Policy can be found on our website at www.hardenhuish.wilts.sch.uk



Curriculum

At Hardenhuish School we believe in providing a broad and balanced curriculum which engages and challenges our pupils so that they achieve the best possible qualifications to enable their future aspirations to be fulfilled. The curriculum is designed to offer a diverse and coherent range of courses and learning experiences so that pupils develop skills and knowledge that remain with them long after examinations. This is so our pupils leave school as confident and independent life-long learners, equipped with the transferable skills needed to thrive in a changing world.

We place a great importance on pupil progress in the core subjects of English, mathematics and science, together with the other English Baccalaureate subjects of the modern foreign languages and humanities. However, Hardenhuish is equally committed to developing pupils' abilities, talents and enjoyment across the full range of subjects including the design, information and computing technologies, expressive and performing arts as well as sport and physical education. One of our fundamental principles is to offer a personalised curriculum tailored to enable each individual pupil to flourish as a learner. Furthermore, Hardenhuish recognises that valuable and often memorable learning also takes place through extra and cross-curricular experiences. This includes our hugely popular Successful Lives Days, such as the 'Smoothie Challenge' in Year 7, the London museums trip in Year 8 and the WW1 day in Year 9, as well as the vast array of clubs, visits and residential trips.

In addition, we also believe in the benefits of promoting the spiritual, moral, cultural, mental and physical development of pupils through our programme of religious, personal, social, health and careers education. This holistic focus enhances the wellbeing of our pupils and helps them to develop as responsible and respectful young adults who make a positive contribution to society.

The school operates a one-week timetable for all pupils. There are 25 hours of teaching time, spread across the different National Curriculum subjects. Each day, lessons are organised into six 50 minute slots. Lessons for most subjects are 50 minutes long, such as ICT, mathematics and modern foreign languages. Others are taught in combinations of 50 minute and 100 minute slots, with practical subjects generally preferring the double session of 100 minutes. Over the next few pages are the curriculum models for Key Stage 3 (Years 7, 8 and 9) and Key Stage 4 (Years 10 and 11).

Key to Abbreviations

D&T	Design & Technology
ICT	Information and Computing Technology
MFL	Modern Foreign Languages
NC	National Curriculum
PE	Physical Education
PSHCE	Personal, Social, Health & Careers Education
RE	Religious Education

Key Stage 3 Curriculum Model

Year	English	Maths	Science	RE&PSHCE	History	Geography	PE	MFL	ICT	D&T	Ex Arts	Options	Total
7	4	4	4	2	1	1	3	4	1	2	4	N/A	30
8	3	3	3	1	2	2	3	4	2	2	5	N/A	30
9	4	4	4	2	2	2	2	4	2	Options 2x2			30

Notes about the **KS3 Curriculum Model**

As shown in the table above, our provision offers a balance of subjects in the National Curriculum. Special features of our KS3 Curriculum are described below.

Science is a balanced course covering biology, chemistry and physics.

Throughout KS3 the vast majority of pupils study French and Spanish, spending half of their time on French and half of their time on Spanish. The vast majority of pupils continue with both French and Spanish in Y9, delivered through 2 x 50 minute lessons in each modern foreign language, with the exception of a small number of pupils who have additional literacy through our literacy plus programme.

In Y7 and Y8 pupils doing D&T gain experience of

working with different media through a carousel programme of food, textiles, resistant materials, systems & control and graphic products. As they go into Y9, they can choose as part of the options system which media they wish to specialise in.

In Y7, Y8 and Y9 pupils have ICT lessons in one of the School's computer rooms. These lessons are designed to improve their level of competence using ICT, including computer programming, enabling them to use technology as a tool in other lessons.

The expressive arts subjects (art, drama and music) are taught as discrete subjects in Y7 and Y8. Dance is also taught as a discrete subject in Y7. In Y9 pupils choose at least 2 options from a range of subjects which includes D&T, expressive arts, business studies and extra PE, in preparation for GCSEs.

Maths and Science start GCSE programmes of study during Y9.



Key Stage 4 Curriculum Model

Year	English	Maths	Science	RE&PSHCE	PE	Option A	Option B	Option C	Option D	Option E	Total
10	4	4	6	2	2	3	3	3	3	Extra curricular time	30
11	4	4	6	2	2	3	3	3	3		30

Notes about the KS4 Curriculum Model

English, mathematics, science, PE and personal education are mandatory subjects which pupils must continue studying during KS4.

English is a course that leads to two GCSE outcomes for all pupils, one in English Language and one in English Literature. Mathematics is a course that also leads to two GCSE outcomes, one in statistics taken in the summer of Year 10 and one in mathematics. An additional level 2 qualification in Further Maths is also offered as an after school option in Year 10.

The science course covers the three main sciences: biology, chemistry and physics. The outcomes for some pupils are three separate GCSEs, but some may achieve two GCSEs in combined science. It is taught by two or three teachers. This means that pupils spend double the time on science as they do on most other subjects.

At Hardenhuish we run a free options choice system, where all the available subjects are listed for pupils to rank order up to four choices, and the timetable for each year group is written to achieve those choices.

As part of their timetable, some pupils may study three option subjects and have extra lessons in English and/or maths together with academic mentoring to maximise achievement across their courses, especially in the all-important core subjects.



Option Subjects

The following optional subjects are currently offered at GCSE level:

- French
- Spanish
- Geography
- History
- Religious Studies
- Business Studies
- Computing
- Art
- Dance
- Drama
- Music
- Design Technology (with a specialism in resistant materials, systems & control or textiles)
- Food Preparation & Nutrition
- Catering & Hospitality*
- Physical Education
- Sports Studies*
- Health & Social Care*

*The subjects marked with a * are alternative qualifications equivalent to a GCSE. The courses in Sports Studies and Health & Social Care are all Cambridge National Awards. The Catering & Hospitality course is a WJEC level 1/2 award.*

We strongly recommend that pupils **choose a broad and balanced curriculum** which includes a modern foreign language and a humanities subject, although this is not compulsory. However, some pupils who have specific strengths and a clear idea of what they want to do after Year 11 may benefit from choosing more

than one course in a particular subject area. There are a few restrictions on pupils' option choices. These are that pupils may choose: only one subject from DT, Food and Catering, only one of computing or ICT, up to two expressive arts subjects and either PE GCSE or Sports Studies.



Sixth Form

Hardenhuish Sixth Form is consistently one of the highest performing school sixth forms in Wiltshire. We pride ourselves on supporting all young people to set themselves challenging goals whilst providing them with dedicated support in order to help them take the next step towards their futures, whatever they may be. Throughout recent years, our students have gone on to secure places on competitive university courses and higher level apprenticeships. In the most recent Sutton Trust research into university access we were proud to be placed as the highest performing comprehensive school in Wiltshire for access to selective universities including Oxford and Cambridge.

In recent years we have seen a significant and sustained growth in our sixth form with many students transferring into our sixth form from other schools. The sixth form currently has approximately 300 students. During Year 11, all applicants to the sixth form have a personalised careers meeting where they can discuss A level options and their future plans with a senior member of the sixth form team. Students are then encouraged to study three or four A level subjects at Hardenhuish Sixth Form. In addition, students choose one option from our Core Programme: some students may complete an EPQ (Extended Project Qualification) whilst others enrol on a Level 3 Core Maths course or Level 3 Sports Leaders programme. We know that these additional subjects, together with our extensive enrichment programme strengthen our students' CVs but also broadens their horizons and provides them with a greater all round experience at Key Stage 5.

The excellent facilities in the Sixth Form centre include newly refurbished study rooms and common rooms, 'The Hungry Stag' café, kitchen facilities and a dedicated ICT suite as well as teaching rooms specifically for Sixth Form lessons.

Sixth Form students have many privileges within the school and rightfully so. In return, they have much to give, supporting other students through our volunteering programme and contributing to the ethos of the school. All Sixth Form students are invited to apply for a position on the Student Leadership Team, giving them the opportunity to develop their leadership skills and drive change within our community. Our Sixth Formers set examples in their work, their outlook and their contributions to the school and their communities.

The A levels currently being offered by the school are:

- Art & Design
- Biology
- Business
- Chemistry
- Computing
- Criminology
- Dance
- Design Technology (Food or Product Design)
- Drama & Theatre
- Arts
- Economics
- English Language
- English Literature
- Film Studies
- French
- Further Mathematics
- Geography
- German
- Government & Politics
- History
- ICT
- Mathematics
- Media Studies
- Music
- Photography
- Physical Education
- Physics
- Psychology
- Religious Studies
- Sociology
- Spanish
- Tourism

Examinations

It is very important to make sure that pupils and parents have all the information they need for GCSE and A level options. We believe that pupils are more likely to achieve their best in their public examinations if they and their parents are clear about all that is involved. Therefore, leading up to your child's examinations, we will provide information and guidance to pupils and parents.

This information includes:

- The courses and assessment requirements for all the GCSE and vocational subjects being offered by the school;
- What pupils need to do in order to do well in their examinations;
- Details of any coursework deadlines in each subject;
- An explanation of the agreement between home and school for ensuring that pupils attend school for the examinations;
- An explanation of the school's examination entry policy.



Religious Education

Religious Education adopts a multi-faith approach to the study of religion. Through this subject pupils investigate how people have answered the ultimate questions, such as: 'Why am I here?', 'Is there a God?', 'What will happen to me when I die?', 'How should I live my life?' and 'Why do people suffer?'

Pupils are encouraged to explore their own responses to these questions, with no particular response being argued for or assumed.

Pupils investigate how the answers to these questions influence the practices of different religions. From these studies it is hoped that pupils will learn to listen to and empathise with others who have different viewpoints from their own. We hope that they will appreciate the influence these

religions have had on their own and other people's cultures. Courses in Religious Studies are run at both GCSE and A Level.

The course is open and relevant to pupils with or without a religious faith. As with Collective Worship, you may withdraw your child from this activity by informing us of your decision in writing. Alternative arrangements will be made for your child to study other topics at this time.



Relationships & Sex Education

The school believes that relationships and sex education is an educational entitlement for all pupils as part of each pupil's emergence into adulthood.

Furthermore, we agree that sex education should:

- **be an integral part of the learning process**, beginning in childhood and continuing into adult life;
- **be provided for all children, young people and adults**, including those with physical, learning or emotional difficulties;
- **encourage exploration of values and moral issues**, consideration of sexuality and personal relationships and the development of communication and decision-making skills;
- aim to equip children and young people with the information, skills and values they need to have safe, fulfilling and enjoyable relationships and to take responsibility for their sexual health and well-being.

- **encourage personal responsibility in all forms of behaviour**;
- **develop self-esteem**;
- **encourage respect and consideration for others**;
- **provide support and information** for young people and their parents;
- **help pupils to feel secure while working on this area**.

The school's complete Relationships and Sex Education Policy is available on the school website at www.hardenhuish.wilts.sch.uk or from the school office.



Special Educational Needs

Arrangements for pupils with **Special Educational Needs** and **Disabilities**

The School has regard for the SEND Code of Practice 2015 and uses the definitions from the Code. A child or young person has SEN if they have a learning difficulty or disability which calls for special educational provision to be made for him or her. A child of compulsory school age or a young person has a learning difficulty if he or she:

- has a significantly greater difficulty in learning than the majority of others of the same age, or
- has a difficulty which prevents or hinders him or her from making use of facilities of a kind generally provided for others of the same age in mainstream schools or mainstream post-16 institutions.

Hardenhuish School aims to include pupils with special educational needs, enabling them to access the curriculum and to participate fully in school life. Our policy is to teach all pupils in mainstream classes and provide support to enable them to do this. The Learning Support department provides alternative provision for some pupils in Modern Foreign Language lessons throughout the School.

We support all children who have SEN and disabilities. The school has Local Authority (LA) funded Enhanced Learning Provision to meet higher-level needs across a range of difficulty. The LA places pupils in this provision. In addition, the School caters for students with a wide range of special educational needs and disabilities. These pupils have full access to the curriculum and extra-curricular activities. Our aim is to be a fully inclusive school where the needs of all our pupils are taken into account.

The Learning Support Department is based on the first and second floor of the House. Some other buildings have recently been refurbished to enable wheelchair access but older areas of the School do not currently have full access.

To ensure that pupils with special educational needs are given the same opportunities to achieve as other pupils, the teaching staff are

informed of the pupils' particular needs so that they are able to make provision and are encouraged to have high expectations for all their pupils through quality first teaching.

The Learning Support department has two teachers (one full-time and one part-time), a team of variously qualified teaching assistants, one full time equivalent Nurture Group Supervisor and a full time SEN Administrator, all led by our SENCo, Debbie Bennett

Please see the SEN Information Report, available on the school website for full details.



Additional information

Term Dates 2023-24

Term 1	4 September – 18 October 2023 (Y7 and Y12 only 4 September)
	5 September – 18 October 2023 (all years return)
Term 2	30 October – 20 December 2023
Term 3	4 January – 9 February 2024
Term 4	19 February – 28 March 2024
Term 5	15 April – 24 May 2024
Term 6	3 June – 19 July 2024
TD Days	1 September 2023, 24 November 2023, 24 June 2024, 22, 23, 24 July 2024

School Day

08.30	Tutor Time
08.45	Lesson 1
09.40	Lesson 2
10.30	Break
10.50	Lesson 3
11.45	Lesson 4
12.35	Lunch
13.15	Lesson 5
14.10	Lesson 6
15.00	End of school day



School Uniform

- Bottle green sweater with gold stripe and school logo*
- Black tailored trousers/tailored skirt (below fingertip length when arms are at the side of legs)/black tailored shorts (optional)*
- White button to neck long/short sleeved shirt/blouse (button free collar, one pocket maximum)
- School tie*
- Black sensible shoes
- Black/white socks or black tights
- Weatherproof coat

PE Uniform

- Green and black winter shirt with gold piping and logo OR Green and black polo shirt with gold piping and logo (Unisex or girl fit)*
- Green and black shorts or skirt with gold piping*
- Green and black hooped socks*
- Hardenhuish waterproof top (compulsory for Year 7,8,9 from September 2023, optional for other years)*
- Black fleece or jacket with green piping and logo (Unisex or 'Girl fit') (optional for Year 10 and above from September 2023, while stocks last)*
- Black branded Hardenhuish leggings or track suit bottoms (optional)*

* Please note that pupils participating in regular contact sports, such as Rugby, will need the winter shirt.

N.B. The full uniform list is in the school's Uniform Policy, available on the school website at www.hardenhuish.wilts.sch.uk. Please note that uniform is compulsory; no extreme hairstyles or visible make-up are permitted. Pupils may wear a watch and a single small stud in one or both ears. All items marked with an asterisk are to be purchased from the School's uniform supplier – Price and Buckland; with the exception of the school tie which can be purchased from the School; please see the uniform page of the school's website for further information.

OTHER PE/GAMES KIT & EQUIPMENT

- Sports trainers
- White socks (summer sports)
- Rugby/football/hockey boots with studs or blades
- Shin pads
- Gum shield (advisable)
- Black base layer top optional (short or long sleeved)
- Black footless long base layer bottoms optional
- Black, plain tracksuit bottoms optional

Transport Arrangements

The Local Authority provides free transport to any of the three nearest secondary schools for pupils in Years 7-11 if the distance from home to school is at least 3 miles and less than 6 miles. This is reduced to a minimum of 2 miles for children who receive free school meals or those receiving the maximum level of working tax credit. This transport is usually by specially commissioned bus, but in some cases is by service bus.

For further information, please contact the Education Transport Section, Wiltshire Council, County Hall, Bythesea Road, Trowbridge, BA14 8JB, Tel: 01225 713577 or <http://www.wiltshire.gov.uk/schools-learning-transport-apply>

Out of Catchment Transport

Provided there are free seats available, pupils living outside of the above limits may be able to travel on Local Authority buses with a bus pass paid for termly if there are sufficient spaces. Pupils entitled to free transport take priority when spaces are allocated.

Public transport, which drops and collects pupils at the Hardenhuish/Sheldon coach park in Hardenhuish Lane, is also available with fares payable daily. Please contact Passenger Transport at County Hall for further information.

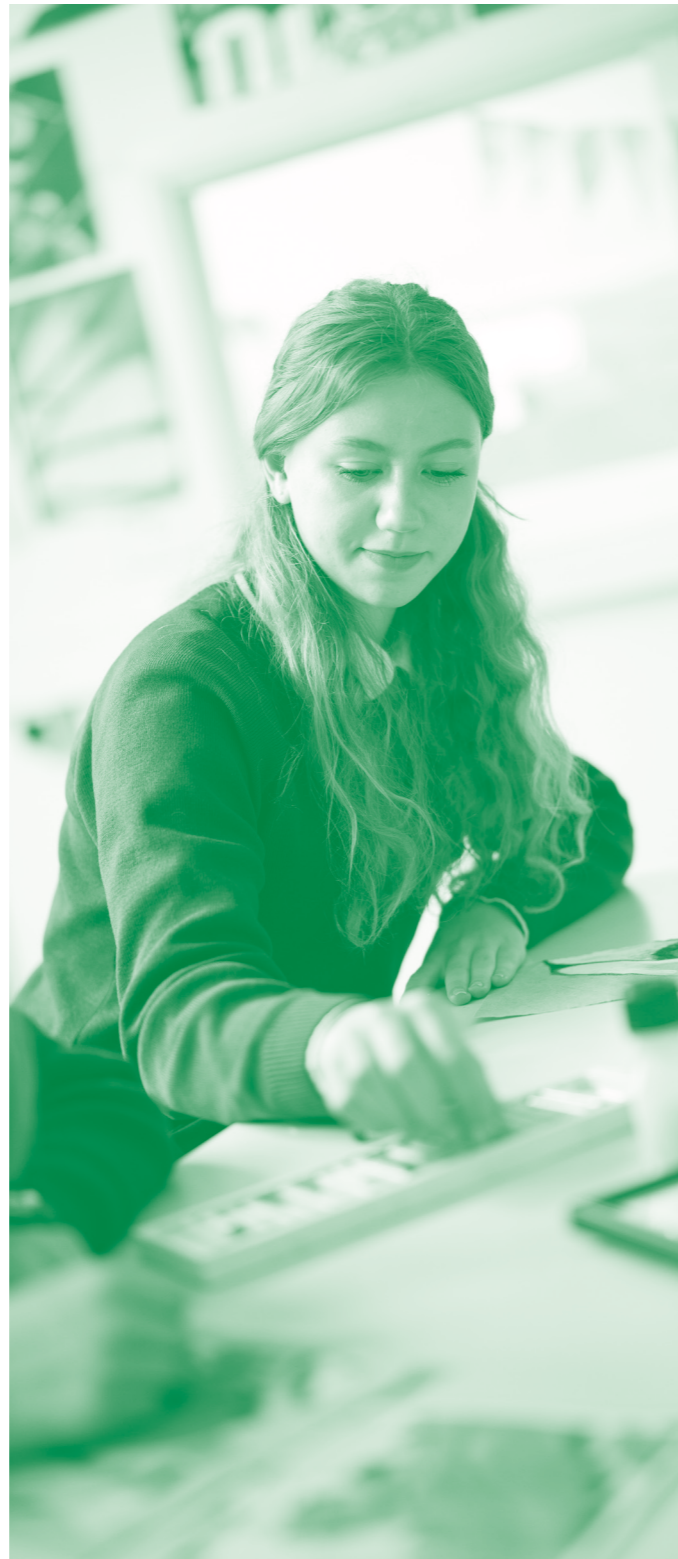


Visiting the School / Open Week / Open Evening

- Our annual Open Evening is held in July.
- Open Week takes place at the end of September. Open Week offers the opportunity to have a tour of the school during a normal working day. Bookings can be made via our website.

If you would like to visit the school at any other time of the year, a member of our Leadership Team will be pleased to give you a guided tour to see us at work and answer any questions you may have.

To arrange a visit or for any admissions enquiries, please telephone 01249 650693 and select option 2 or ask to speak to the Leadership Team PA.



Leadership

The School's Leadership Team comprises the Headteacher, two Deputy Headteachers, three Assistant Headteachers, the Business Manager and two Seconded Leadership Team members.

Hardenhuish School's Governing Body comprises of co-opted and parent governors, including the Headteacher. Their varied skill set enables them to offer support and appropriate challenge to the school.

A full list of School Governors can be found on our website at www.hardenhuish.wilts.sch.uk



OfSTED Report

The school's latest OfSTED report recognised the "good quality of education", "strong personal development", "strong teaching" and that pupils felt "very safe in school". The full report can be found on our website at www.hardenhuish.wilts.sch.uk

Hardenhuish Educational Trust

Hardenhuish Educational Trust has been established by parents, staff and governors. The Trust is independent of the Friends of Hardenhuish, but complements its work in providing for the pupils. Trustees are nominated by parents (through the Friends of Hardenhuish), the staff and the governors.

With the help of this Charitable Trust the School has benefited immensely over recent years with additional classroom resources leading to greater pupil achievement.



Friends of Hardenhuish

The Friends of Hardenhuish is a group of parents, staff and other members of our local community who try to organise a number of events across the year to raise money for luxuries that improve life at Hardenhuish. These events have traditionally ranged from Christmas Fayres, to Quiz Nights and Summer Events. In past years, the Friends have raised thousands of pounds which are put back into the School but we also hope that the group is a good way for parents to get more involved in the life of the school and find out more about what we do.

The Friends try to meet regularly (sometimes in person and sometimes virtually), but parents and staff can get involved at any time by helping to run a particular event or selling tickets. To be a friend of Hardenhuish you do not have to be a parent, just interested in the success of the School and its pupils.

Updates will be sent regularly through the Hardenhuish Headlines but, in the meantime, if you are interested in joining the Friends, please contact Mr Woollin, Deputy Headteacher, for further information.

Attendance

Hardenhuish School works hard to maintain an excellent attendance and punctuality record, not least because of the strong link that exists between attendance and attainment. Attendance is closely monitored and unexplained absences quickly investigated by our Attendance Officer, Attendance Support and Intervention Leader and Pastoral Managers.

Destinations

Destinations of Year 13 students 2023

University/Further Education:	74%
Employment/Apprenticeship:	13%
Gap Year Programme:	13%

Of those students who started university in September 2023, 46% went on to attend a Russell Group university and in the most competitive subjects, including medicine.

Destinations of Year 11 pupils 2023

School Sixth Form:	55%
Further Education:	39%
Employment & Training:	5%
Other:	1%

Exam Results

Hardenhuish has a long-standing reputation for fantastic exam results. Our staff are dedicated and hardworking and instil in our pupils the belief that they can succeed, encouraging and supporting them to have high aspirations and be determined to meet them.

Despite the disruption to learning over the last few years that has affected all schools as a result of the pandemic, the 2023 exam results showed few ill effects of this and were in line with our very good results from the years before 2020. It is worth remembering that the class of 2023 are the first post-pandemic year group to have not been afforded the same special considerations that the cohorts of the last 3 years were so for them to achieve in line with 2019 demonstrates that Hardenhuish has extraordinary pupils and students, fantastic teachers and terrific support from our parents and Governors.

Some key headlines from our 2023 results include:

- 35% of GCSE grades were at 9-7
- 24% of GCSE grades were at 9-7
- 73% of pupils achieved the Basics Measure (9-4 in English and maths)

Most pupils met or exceeded their challenging targets and there were some exceptional individual performances:

- 20% of the year group achieved 5 or more 9-7 grades
- 20 pupils achieved at least 10 9-7 grades

Whilst acknowledging the enormous achievements of the highest achievers is important, we are proud of the progress made by every pupil during their time at Hardenhuish.

Our pupil centred approach along with the fantastic support and dedication of our wonderful teachers enables our young people to move on to the next stages of their careers with confidence.

The A level results of the class of 2023 are also to be celebrated:

- 59% of grades were at A*-B
- 28% of grades were at A*/A
- 59% of students achieved at least one A*/A grade
- 9% of our students achieving three or more of the top grades. Three students achieved straight A* grades

Many of our students continued to make excellent progress and met their challenging targets generated by their GCSE results from 2 years ago that were generated by teacher assessed grades. This high number of top grades secured places for 70% of students at their first choice university with a further 11% achieving their back up option.



Supplementary Information 2023-24

Hardenhuish School

Hardenhuish Lane,
Chippenham,
Wiltshire,
SN14 6RJ

Telephone: 01249 650693

Email: admin@hardenhuish.wilts.sch.uk

