



# HARDENHUISSH SCHOOL CATCHMENT AREA

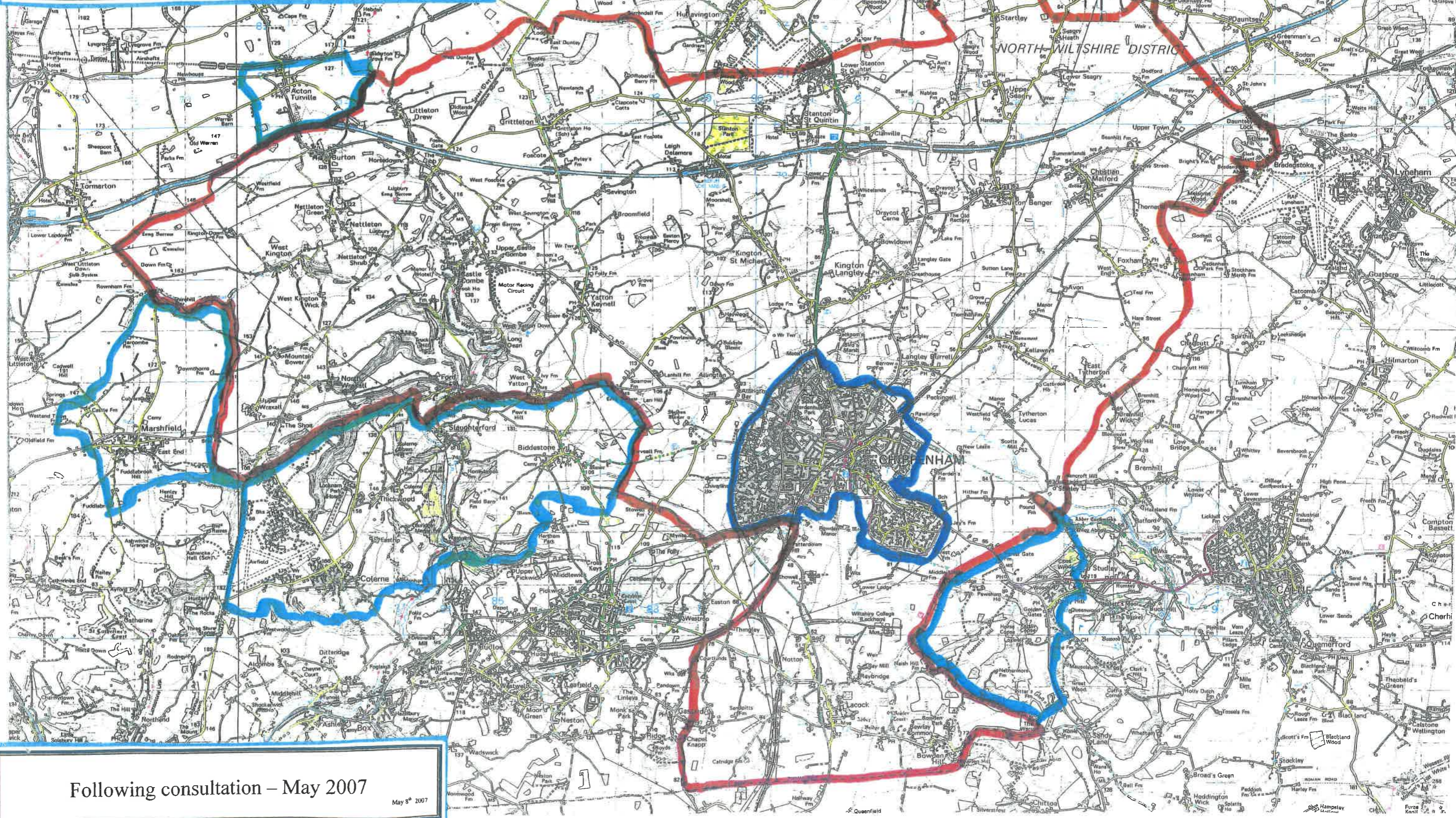
Designated Rural Parishes of the Wiltshire County Council  
Transport Catchment Area Map (November 2006)



Chippenham "Urban" Area



Traditional, Sheldon designated and Non Wiltshire catchments



Following consultation – May 2007

May 8<sup>th</sup> 2007